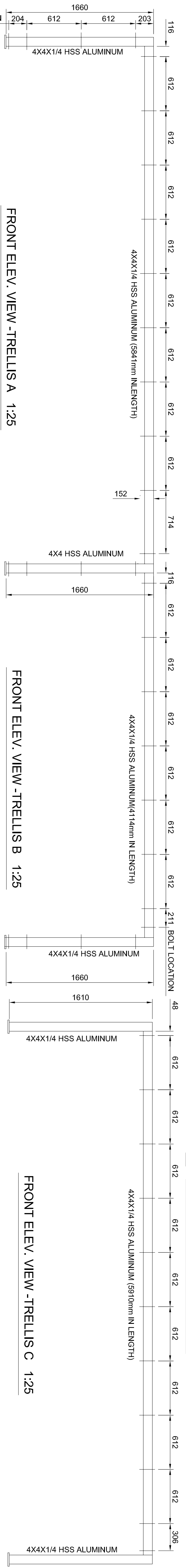


PLAN VIEW - TRELLIS A 1:25

PLAN VIEW - TRELLIS B 1:25

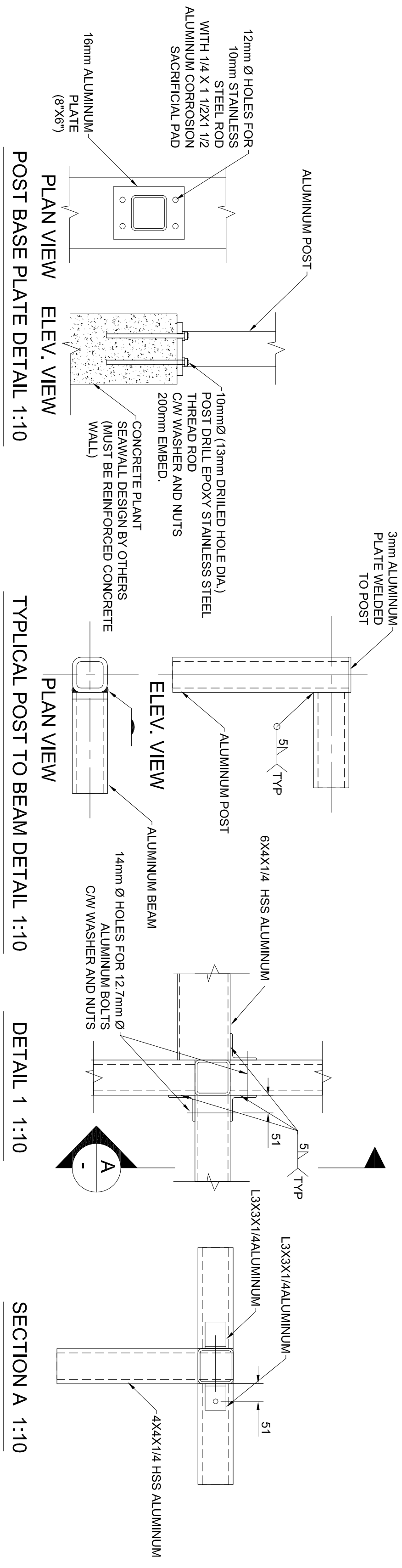
PLAN VIEW - TRELLIS C 1:25



FRONT ELEV. VIEW - TRELLIS A 1:25

FRONT ELEV. VIEW - TRELLIS B 1:25

FRONT ELEV. VIEW - TRELLIS C 1:25



POST BASE PLATE DETAIL 1:10

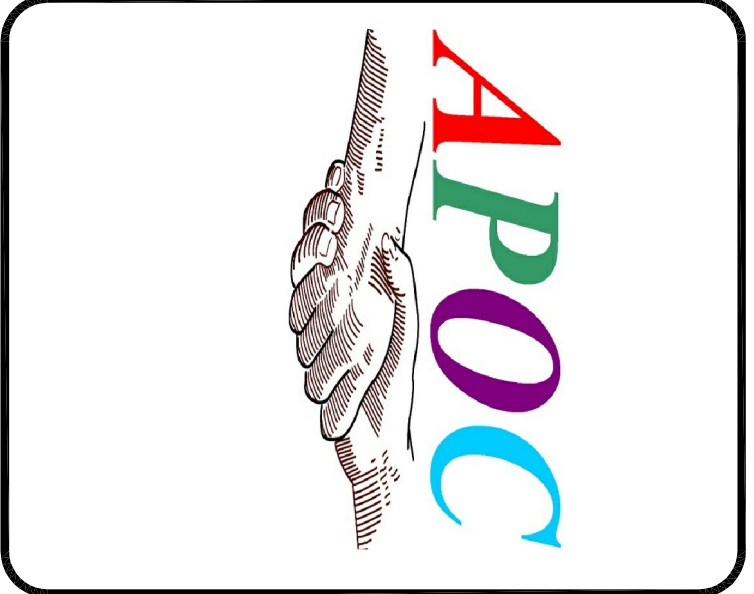
TYPICAL POST TO BEAM DETAIL 1:10

DETAIL 1 1:10

SECTION A 1:10

**GENERAL NOTES AND SPECIFICATIONS**

1. ALL STRUCTURAL ALUMINUM TO CONFORM TO 6061-T6 TENSILE Fy=35 ksi
2. ALL STRUCTURAL BOLTS AND SCREWS TO BE A316 STAINLESS STEEL
3. ALL METAL COMPONENTS TO BE SHOP PAINTED BLACK AND ALL METAL HARDWARE TO BE STAINLESS STEEL, PAINTED TO BLACK TO MATCH THE FRAME.

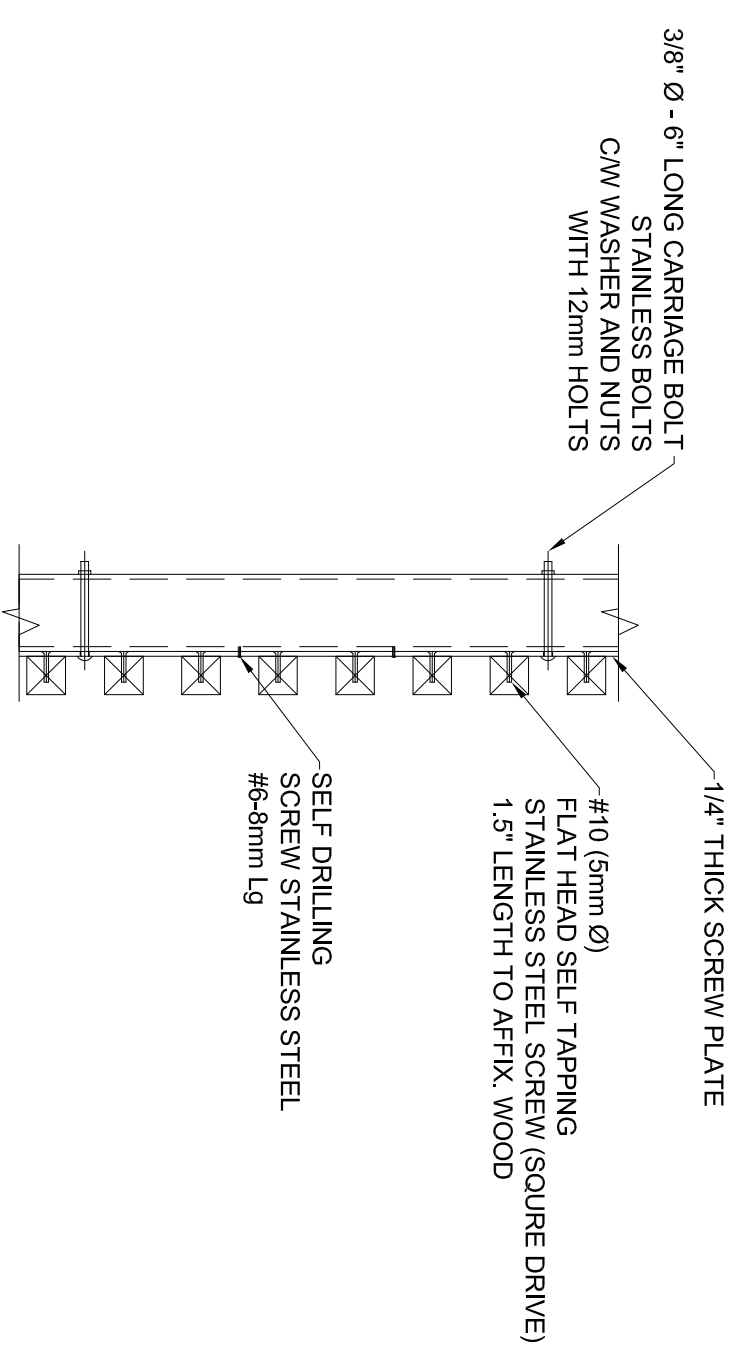
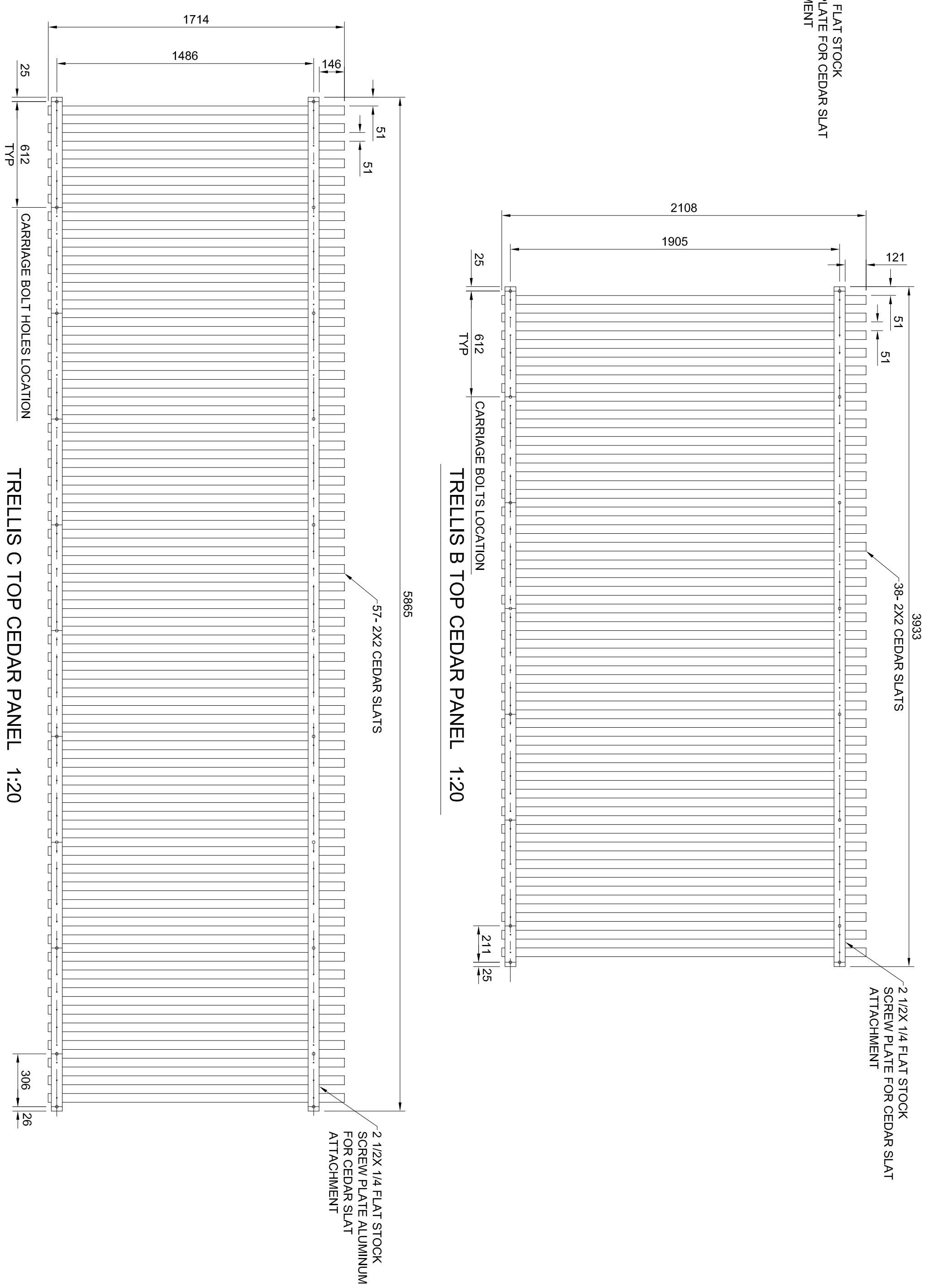
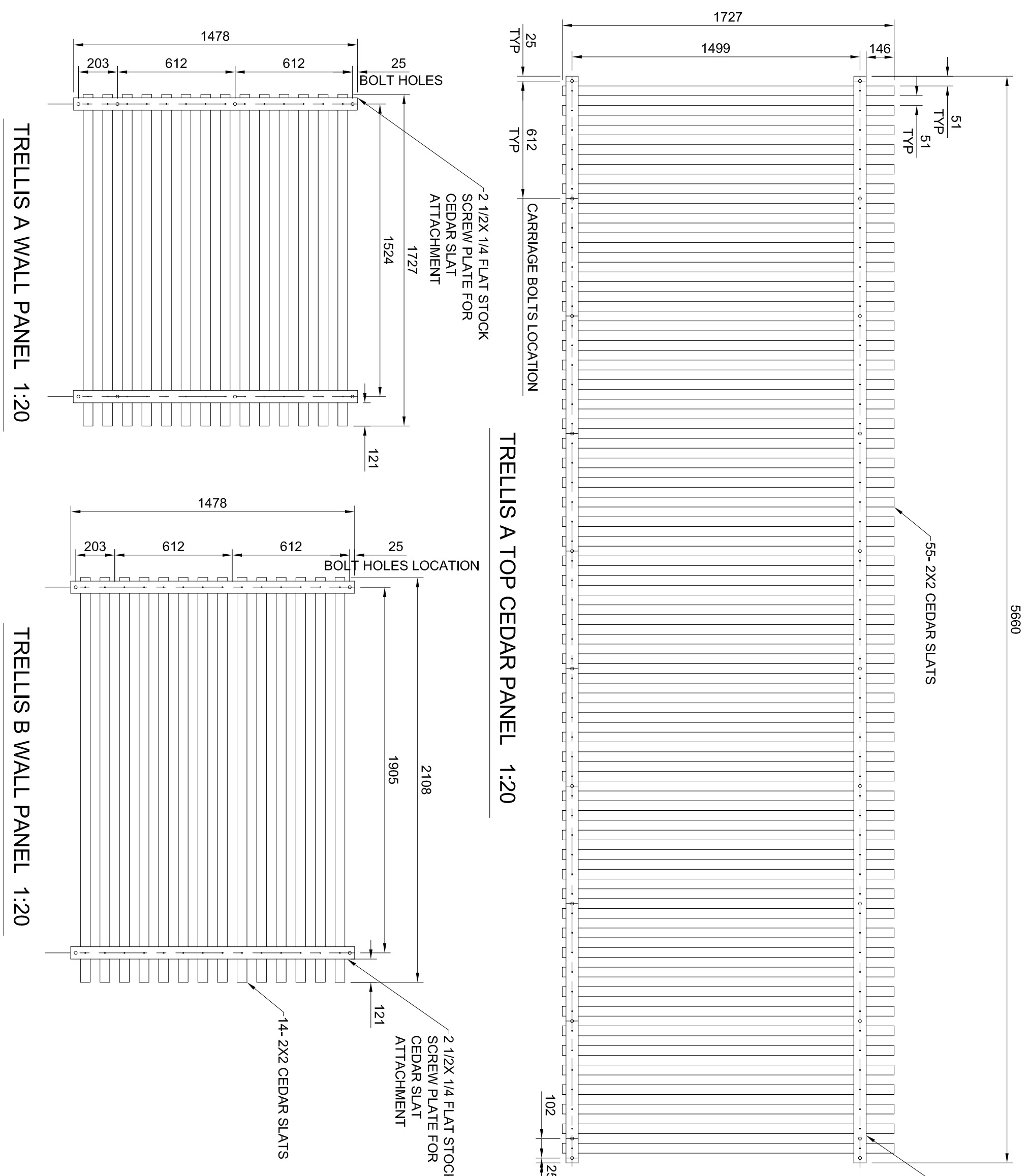


DRAWING REFERENCE			
No.	DATE	BY	REVISION
A	2015/03/31	VW	TRELLIS AND PANELS

JOB NUMBER:	01100
DRAWN:	2015/03/31
APPROVED:	
DATE:	
SCALE:	AS NOTED
SEAL:	

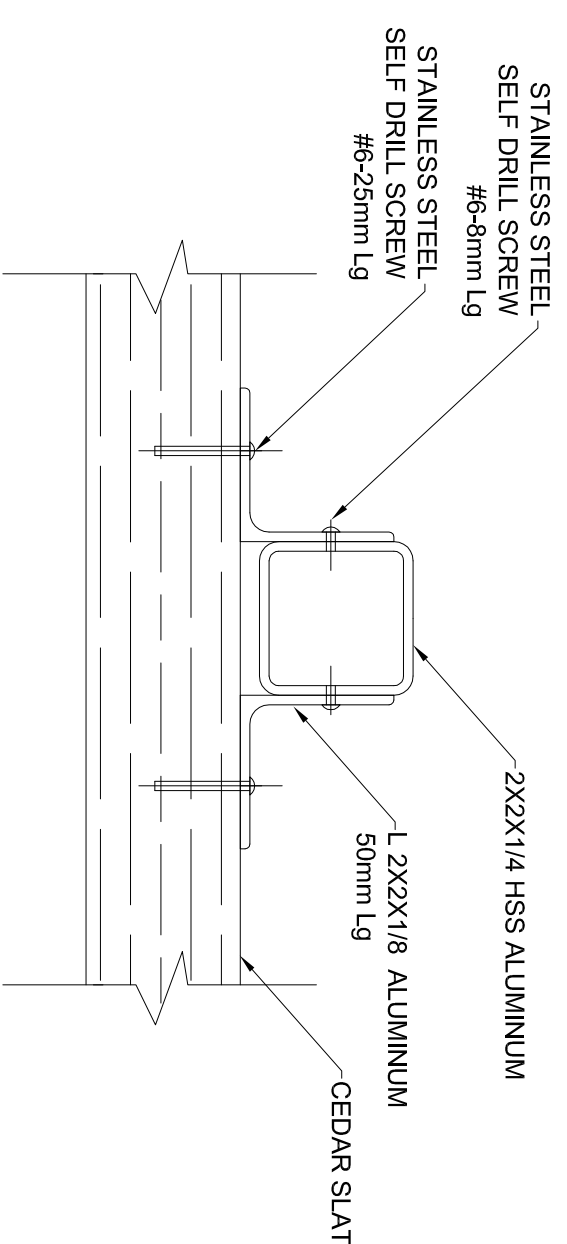
CONSULTANT:	
<b>APOC Engineering Ltd.</b> 410-3701 Hastings St. Burnaby B.C. Canada V5C 2H5 apocengineering.com 604.293.0250	
DRAWING TITLE:	
<b>ALUMINUM TRELLIS FRAME AND DETAILS</b>	
PROJECT TITLE:	
TRELLIS FRAMES AND PANELS	
PROJECT LOCATION:	
COQUITLAM, BC	

DRAWING NO:	REV.	SHEET
01100-1	A	1
		2



TYPICAL CEDAR SLAT TO ALUMINUM MEMBER CONNECTION

Scale 1:10



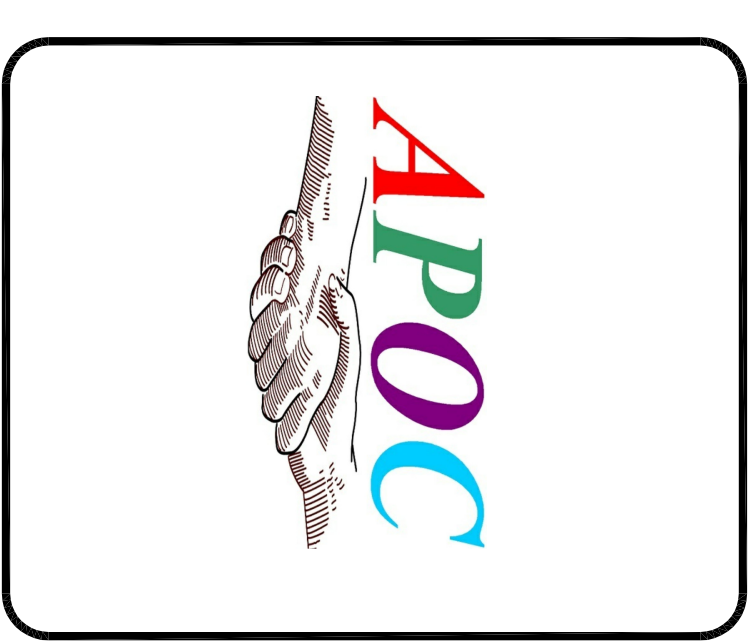
SUGGESTED CEDAR SLAT TO 2X2 HSS ALUMINUM MEMBER CONNECTION  
(2 REQ. PER TRELLIS @ EVEN SPACING, FIELD INSTALLATION)

Scale 1:2.5

GENERAL NOTES AND SPECIFICATIONS

1. ALL TIMBER SLATS TO BE NO. 1 GRADE YELLOW CEDAR.
2. ALL TIMBER SLATS TO BE TREATED TO CSA 080 STANDARDS REFER TO ARCHITECTURAL DRAWINGS FOR TREATMENT DETAILS

DESTROY ALL PRINTS BEARING PREVIOUS NO.



DRAWING REFERENCE			
No.	DATE	BY	REVISION
A	2016/04/03	VW	PANELS

JOB NUMBER:	01100
DRAWN:	VW
APPROVED:	
DATE:	
SCALE:	AS NOTED
SEAL:	

CONSULTANT:	<b>APOC Engineering Ltd.</b> 410-3701 Junctions St. Burnaby B.C. Canada V5C 2J6 apocengineering.com 604-299-0730
DRAWING TITLE:	CEDAR SLAT PANELS
PROJECT TITLE:	TRELLIS FRAMES AND PANELS
PROJECT LOCATION:	COQUITLAM, B.C.

DRAWING No	REV.	SHEET
01100-2	A	2